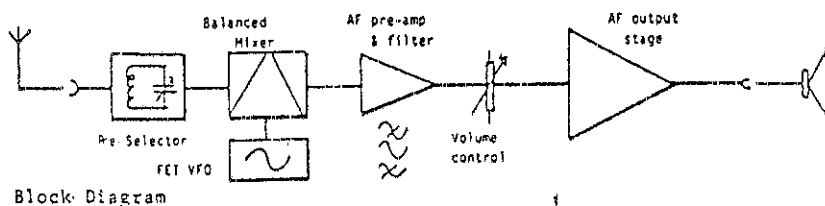


# C.M.HOWES COMMUNICATIONS

## DcRx20

### 20M SSB/CW RECEIVER

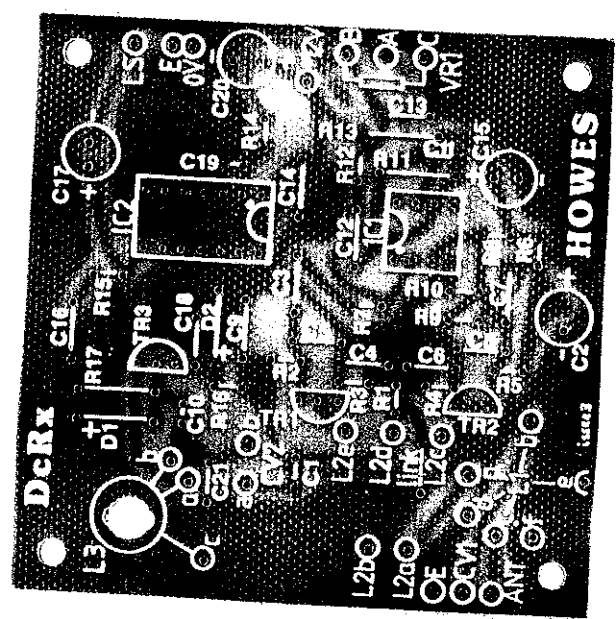
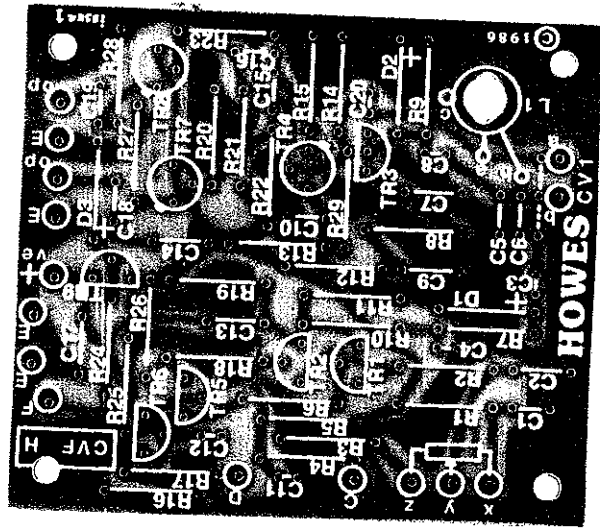
- \* 20M Amateur Band receiver.
- \* 12 to 14V DC operation.
- \* Up to 1W output for 'speaker or headphones (8 ohm min.)
- \* Direct Conversion with balanced mixer, FET VFO and 2 "chips".
- \* Easy to build.
- \* Full instructions, PCB and all board mounted components.



Made in England

Matching filter and S meter kits are available

C.M.HOWES COMMUNICATIONS, EYDON, DAVENTRY,  
NORTHANTS NN11 6PT ENGLAND. Tel: 0327 60178



10/20/54

