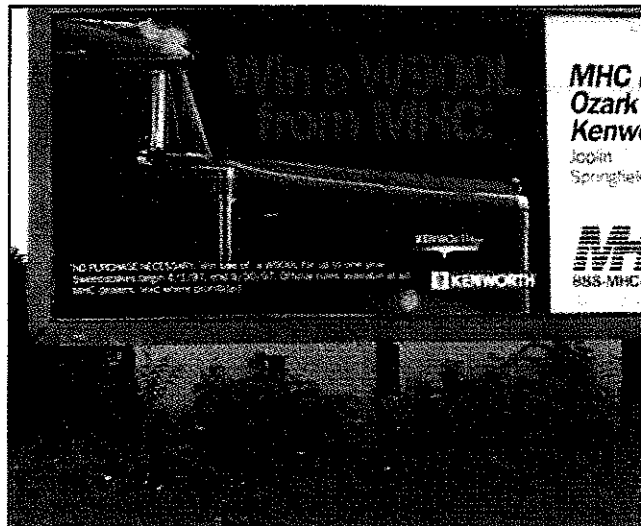


**Wood you put up a tower like this one?** Excuse the pun, but it applies perfectly to these photographs. Douglas Bainbridge, NØHPK, assembled a 72-foot tower made entirely of Douglas fir and held together with nails and epoxy adhesive. From a distance it looks like any steel tower (right). Only when you're up close (above) do you realize that it is made of wood. Despite the load from his 2-element, 15 and 17 meter quad antenna, the tower has withstood wind gusts above 70 MPH.

STEVE AUVER, N2TKX



**Aeronautical SSTV.** Visitors to the Amateur Radio exhibit at the Syracuse, New York, Museum of Science and Technology were treated to an unusual slow-scan TV (SSTV) demonstration. The local Civil Air Patrol (CAP) demonstrated the equipment they use to support their damage-assessment duties. Operating from a CAP aircraft, the gear transmits still photos to amateur ground stations using SSTV. For this image the aircraft flew over the domed stadium at Syracuse University. Watching the results (left to right) are Jim Edmonds, WA1KPG, of the Civil Air Patrol; Rachel Nettleton, Director of Education for the museum; and Pete Newell, KC2WI of the Civil Air Patrol.



**But what does W900L think?** And what would the winner do with the hapless ham? Not to worry. According to the FCC database, the call sign W900L is currently unassigned. That's probably a good thing. The winner of MHC's contest would no doubt have the poor guy stringing up new house wiring, doing dishes, taking out cat litter and other ungodly acts. Gary Meyers, KYØB, snapped this thought-provoking shot southwest of Springfield, Missouri.